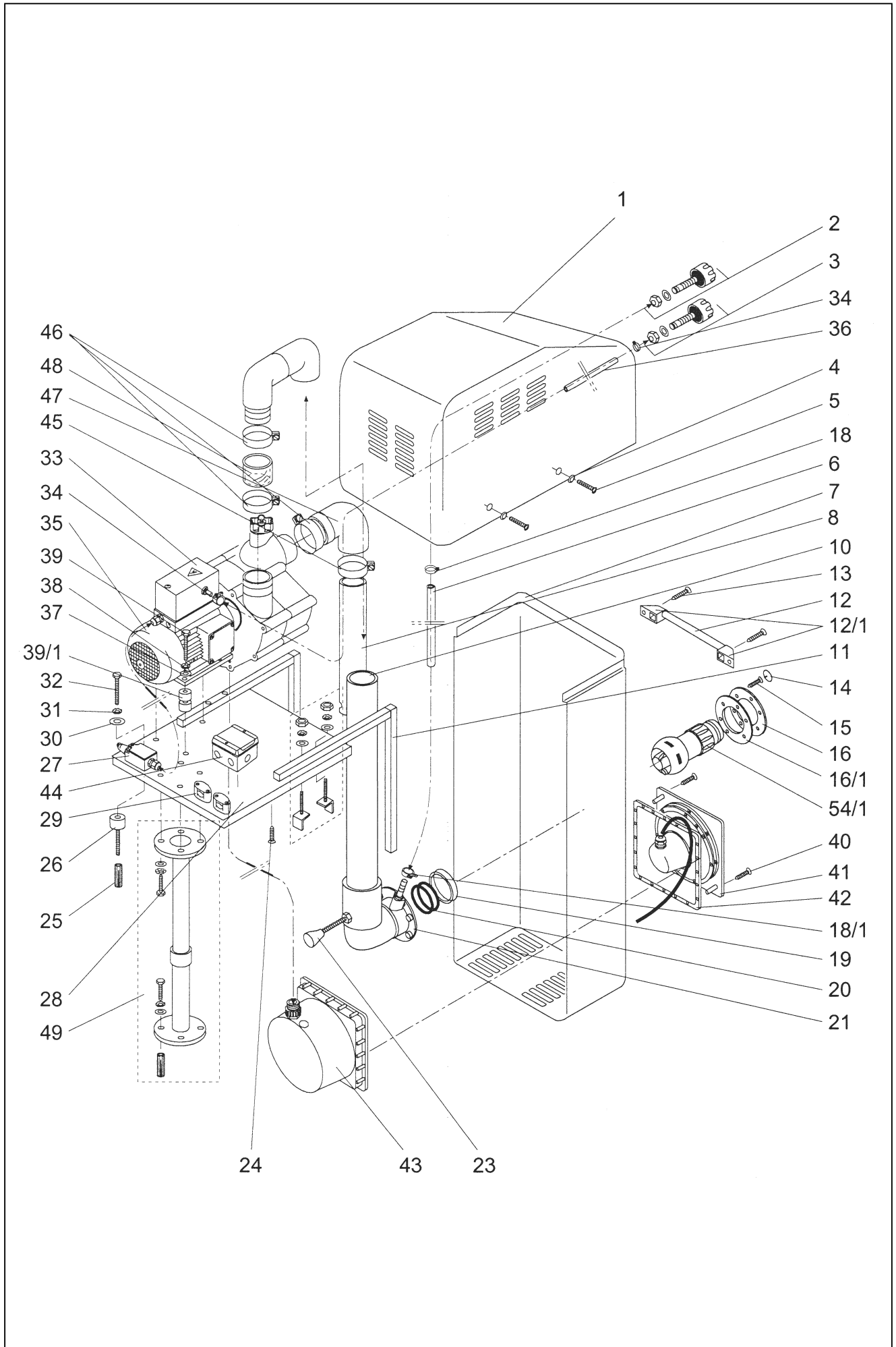


xxx PROTIPROUD BADU JET SWING



detail	identifikace	popis
	2336007000	X Cover cpl.
1	2336007001	X Cover
2	2307007500	X Air regulator cpl.
3	2302001600	X Pneumatic pushbutton cpl.
4	2306007006	X Beaded disk for M5, brass, nickled-plated
5	5879640516	X Oval head countersunk screw M5 x 16, A 2
6	2301001007	X mtr.PVC-tubing, 8 x 3mm,crystal-clear,with woven fabric
	2335002000	X Mantlet,white,matte,cpl.,for Badu Jet Swing
	2335202000	X Mantlet,white,matte,cpl.,for Badu Jet Swing-spot
7	2335002001	X Mantlet,white,matte,single,for Badu Jet Swing
7	2335202001	X Mantlet,white,matte,single,for Badu Jet Swing-spot
8	2306003000	X Suction pipe, cpl.
10	2305004000	X Pressure pipe, cpl.
11	2307501500	X Connecting angle
12	5861400201	X mtr. pipe, plastic, white
12/1	2306002002	X Fixing for handle, white
13	5879826325	X Sheet metal (self-tapping)screw 6,3 x 25mm, A 4
14	2301000010	X Decorative cap for Philips screw
15	5879825520	X Countersunk head screw, 5,5 x 19mm, A 4
16	2306002009	X Housing flange W 2364
16/1	2306002014	X Flat packing, 120 x 80 x 1mm
18	5873011409	X Hose clamp, SM 9 14mm, A 4
18/1	2301004001	X Clic clamp, 14mm, A 4
19	2302002056	X Retainer ring
20	2302002057	X Hose clamping ring, 60 x 73,5 x 6,2mm
20/1	2302002158	X Hose clamping ring, 60 x 73,5 x 1,5mm
20/2	2302002058	X Hose clamping ring, 60 x 73,5 x 1mm
21	2303005008	X Nozzle housing
23	2307004003	X Spacer extension
24	5879826338	X Sheet metal (self-priming)screw,6,3 x 38mm, A 4
25	2306006006	X Expanding bolt, M8, brass
26	2306006005	X Rubber/metal buffer, M8 x 36mm
27	5880800404	X Position switch cpl.
28	2335001000	X Base plate with threaded inserts
29	5883300095	X Strain relief clamp for Badu Jet Swing
29	5883300095	X Strain relief clamp for Badu Jet Swing-spot
30	5879021080	X Washer, dia = 8,4mm, A 2

detail	identifikace	popis
31	5876797080	X Lock washer, dia = 8,4mm, A 2
32	5879330830	X Hex bolt, M8 x 30mm, A 2 (for rear)
32/1	5879330850	X Hex bolt M8 x 50mm, A 2 (for front)
33	2306008000	X Junction box cpl., 3 phase (6 - 10A)
33	2306108000	X Junction box cpl., 1 phase (10 - 16A)
33/1	2306008500	X Junction box mounting assembly
34	2302080082	X Hose clamp 9/9, A 2
35	2305105002	X Jet-pump,type 21-80/32 RS,in 1 phase, 2,2kW
35	2305005002	X Jet-pump,type 21-80/32 S,in 3 phase, 2,6kW
36	2302080083	X mtr.PVC-tubing, 6 x 1,5mm, crystal-clear
37	5871250800	X Washer,dia = 8,4mm, A 4
38	5876797080	X Lock washer, dia = 8,4mm, A 2
39	5879330820	X Hex bolts M8 x 20mm, A 4
39/1	2306005010	X Rubber/metal buffer
40	X	X Flathead countersunk bolt M4 x 40
41	2306002100	X Luminaire,cpl. with mantlet,socket,lamp 300W and cable
42+43	X	X Mounting frame and housing, cpl.
	2306002004	X Reparation bulb
44	2336200300	X Junction box
45	2302003069	X Hose clamp, 87 x 20mm
46	2306004009	X Hose clamp, S 92/20 SKZ
47	2306003001	X Rubber angle, dia = 81 x 75mm
48	2306004003	X PVC hose 80 x 5,5 x 50mm
49	2307851000	X Telescoping safety support
54/1	2302002854	X Ball nozzle, dia = 40mm, variable
	2306002006	X Transformer, 300 VA