

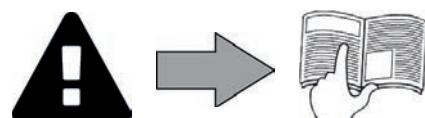
# CyclonX™



**Instructions for installation and use - English**  
Electric cleaner  
Translation of the original instructions in french

**EN**

More documents on:  
[www.zodiac.com](http://www.zodiac.com)





## WARNINGS

### GENERAL WARNINGS

- Failure to respect the warnings may cause serious damage to the pool equipment or cause serious injury, even death.
- Only a person qualified in the technical fields concerned (electricity, hydraulics or refrigeration) is authorised to perform this procedure. The qualified technician working on the appliance must use/wear personal protective equipment (such as safety goggles and protective gloves, etc.) in order to reduce the risk of injury occurring when working on the appliance.
- Before handling the appliance, ensure that it is switched off and isolated.
- The appliance is intended to be used only for swimming pools and spas; it must not be used for any purpose other than that for which it has been designed.
- It is important that the appliance is operated by people who are competent and qualified (both physically and mentally), after having read the instructions for use. All persons not meeting these criteria must not approach the appliance in order to avoid exposure to dangerous elements.
- Keep the appliance out of the reach of children.
- The appliance must be installed according to the manufacturer's instructions and in compliance with local standards. The installer is responsible for installing the appliance and for compliance with national installation regulations. Under no circumstances may the manufacturer be held liable in the event of failure to comply with applicable local installation standards.
- For any work other than the simple user maintenance described in this manual, the product should be referred to a qualified professional.
- Incorrect installation and/or use may cause serious damage to property or serious injuries (possibly causing death).
- All equipment, even postage and packing paid, travels at the risks and perils of the recipient. The latter shall issue reserves in writing on the carrier's delivery slip if damage is detected, caused during transport (confirmation to be sent to the carrier within 48 hours by registered letter). In the event that an appliance containing coolant has been turned on its side, mention your reservations in writing to the carrier.
- If the appliance suffers a malfunction, do not try to repair it yourself; instead contact a qualified technician.
- Refer to the warranty conditions for details of the permitted water balance values for operating the appliance.
- Deactivating, eliminating or by-passing any of the safety mechanisms integrated into the appliance shall automatically void the warranty, in addition to the use of spare parts manufactured by unauthorised third-party manufacturers.
- Do not spray insecticide or any other chemical (inflammable or non-inflammable) in the direction of the appliance, as this may damage the body and cause a fire.
- Zodiac® heat pump, filtration pump and filter appliances are compatible with the most commonly used types of pool water treatment systems.
- Do not touch the fan and/or moving parts or insert a rod or your fingers in the vicinity of the moving parts while the appliance is in operation. The moving parts may cause severe injury, including death.

### WARNINGS ASSOCIATED WITH ELECTRICAL APPLIANCES

- The electrical supply to the appliance must be protected by a dedicated 30 mA differential residual current protection device (RCD), complying with the standards and regulations in force in the country where it is installed.
- Do not use an extension cord to plug in the appliance; plug it directly into a proper wall socket or outlet.
- Before carrying out any operations, check that:
  - The voltage indicated on the rating plate of the appliance corresponds to the mains voltage,
  - The power grid is adapted to the power requirements of the appliance, and is grounded.
  - The plug (where applicable) is suitable for the socket.
- In the event of abnormal function or signs of overheating such as a burning odour from the appliance, turn it off immediately, unplug it from its power supply and contact a professional.
- Before accessing the enclosure for any reason, ensure that all power to the appliance and also power to any accessories or external devices which may be connected to the appliance, is disconnected from the mains power supply.
- Do not disconnect and reconnect the appliance to the power supply when in operation.
- Do not pull on the power cord to disconnect it from the power supply.
- If the supply cord is damaged, it must be replaced by the manufacturer, its service agent or similarly qualified persons in order to avoid a hazard.
- Do not attempt to carry out any servicing or maintenance operations with wet hands or while the appliance is wet.
- Ensure that all terminals for mains power are free in good condition and free of corrosion and/or dirt/debris.
- For any component or sub-assembly containing a battery: do not recharge or dismantle the battery, or throw it into a fire. Do not expose it to high temperatures or direct sunlight.
- In stormy weather, unplug the appliance to prevent it from suffering lightning damage.
- Do not immerse the appliance in water (with the exception of cleaners) or mud.

### SPECIFIC FEATURES APPLICABLE TO "Pool cleaners"

- The cleaner must operate in pool water with a temperature of between 15°C and 35°C.
- To avoid possible injury and damage to the cleaner, do not operate the cleaner out of the water.
- In order to prevent possible injury, bathing is prohibited when your cleaner is in the pool.
- Do not use the cleaner during shock chlorination.
- Do not leave the cleaner unattended for an extended period.

### WARNING ON THE USE OF A CLEANER IN A POOL WITH A VINYL SURFACE:

- Before installing your new cleaner, carefully inspect the lining of your pool. If the liner has eroded in some areas, or if you notice gravel, folds, roots or corrosion caused by metal on the inner surface of the liner, or if you notice that the support (bottom and walls) is damaged, do not install the cleaner before performing the necessary repairs or before replacing the liner using a qualified professional. The manufacturer cannot be held liable in any way for damage caused to the liner.
- The surface of certain vinyl patterned surfaces can wear rapidly and the patterns disappear on contact from objects such as cleaning brushes, toys, inflatable buoys, chlorine distributors and automatic pool cleaners. The decoration on some vinyl surfaces can be scratched or worn by basic friction such as through the use of a pool brush. The colours of certain patterns can also be erased during use or when in contact with objects in the pool. The erased patterns, wear or scratching of vinyl surfaces are not the liability of the manufacturer and are not covered by the limited warranty.

### Recycling



This symbol means that your appliance must not be thrown into a normal bin. It will be selectively collected for the purpose of reuse, recycling or transformation. If it contains any substances that may be harmful to the environment, these will be eliminated or neutralised.

Contact your retailer for recycling information.



- Before handling the appliance, it is vital that you read this installation and user manual, as well as the "warnings and warranty" booklet delivered with the appliance. Failure to do so may result in material damage or serious or fatal injury and will void the warranty.
- Keep and pass on these documents for later consultation during the appliance's service life.
- The distribution or modification of this document in any way is prohibited, without prior authorisation from Zodiac®.
- Zodiac® is constantly developing its products to improve their quality. The information contained herein may therefore be modified without notice.

## CONTENTS

EN



### 1 Specifications 3

- 1.1 | Description 3
- 1.2 | Technical specifications and marking 4



### 2 Installation 5

- 2.1 | Set-up 5
- 2.2 | Attachment to the base or caddy assembly 6



### 3 Use 7

- 3.1 | Operating principle 7
- 3.2 | Pool preparation 7
- 3.3 | Immersing the cleaner 7
- 3.4 | Electricity supply connections 8
- 3.5 | Starting the cleaning cycle 9
- 3.6 | Ending the cleaning cycle 11



### 4 Maintenance 12

- 4.1 | Cleaning the filter 12
- 4.2 | Cleaning the propeller 13
- 4.3 | Replacing the brushes 14
- 4.4 | Replacing the tracks 15



### 5 Troubleshooting 16

- 5.1 | Appliance behaviour 16
- 5.2 | User alerts 17



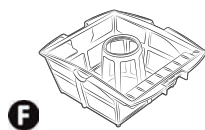
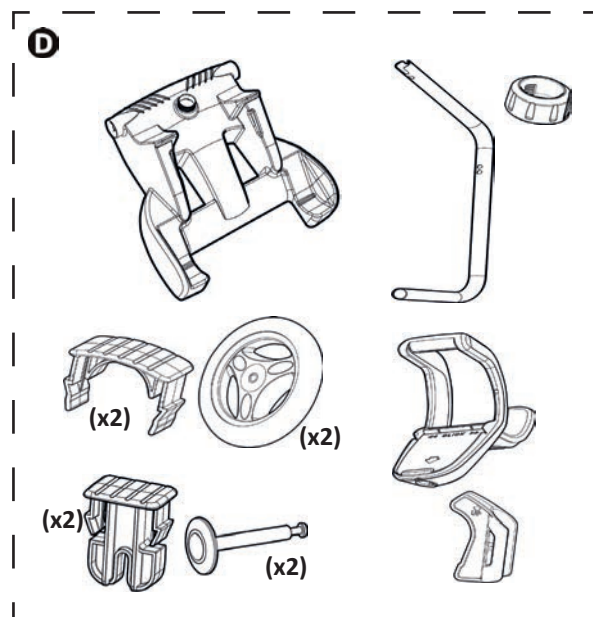
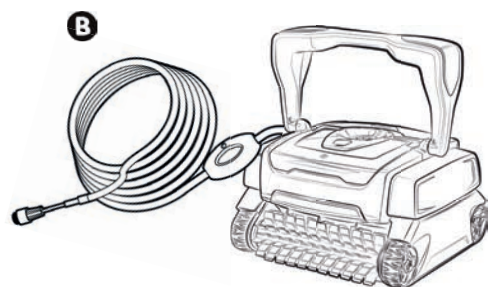
**Tip: to make it easier to contact your retailer**

Write down your retailer's contact details to help you find them more easily and fill in the "product" information on the back of the manual; your retailer will ask you for this information.



# 1 Specifications









## 1.1 I Description



		OC 3300 TILE	OC 3400 - RC 4100 - RC 4130 - RC 4350 - RC 4360 - RC 4370 - RC 4400	RC 4300	RC 4401	RX 4450
A	Cleaner A + floating cable	✓	✓	✓	✓	
B	Cleaner B + floating cable					✓
C	Control box	✓	✓	✓	✓	✓
D	Caddy kit	+	✓	+	✓	✓
E	Base for control box	✓		✓		
F	100µ fine debris filter	✓	✓	✓	✓	✓
	200µ large debris filter	+	+	+	+	+
	60µ very fine debris filter					
G	Standard flap brushes	+	✓	✓		✓
	Flap brushes Polyester casings	+	+	+	✓	+
H	PVA brushes tiling - enamel	✓	+	+	+	+
I	Protective cover	+	+	+	+	+

✓ : Supplied

⊕ : Available as an option

Symbol	Designation	OC 3300 TILE - OC 3400 - RC 4100 - RC 4130 - RC 4300 - RC 4350 - RC 4360 - RC 4370 - RX 4450	RC 4400 - RC 4401
	Start/Stop the appliance	✓	✓
	"Control" indicator	✓	✓
	<b>Surface Control System</b> = Surface inspection	✓	✓
	"Clean filter" indicator		✓
	<b>Surface to clean</b>  Bottom only	✓	✓
	 Bottom + sides + water line	✓	✓
	-0.5H +0.5H Increase / Reduce the cleaning time		✓

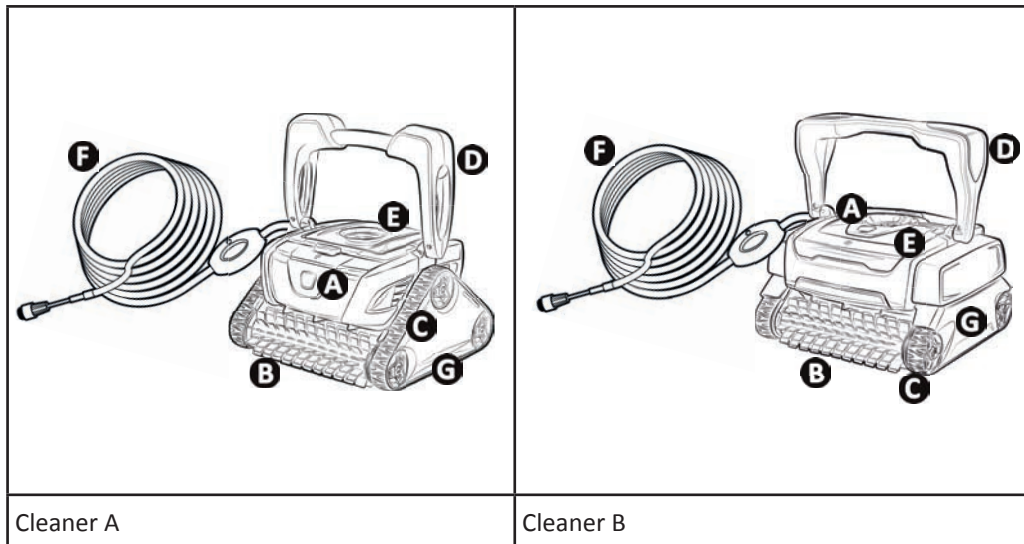
✓ : Available

## 1.2 I Technical specifications and marking

### 1.2.1 Technical specifications

	OC 3300 TILE - RC 4300	RC 4100 - RC 4130 RC 4350 - RC 4360 - RC 4370 - OC 3400 - RX 4450	RC 4400 - RC 4401
Control box power supply voltage	220-240 VAC, 50 Hz		
Cleaner power supply voltage	30 VDC		
Maximum power input	150 W		
Cable length	15 m		18 m
Cleaner size (L x W x h)	41 x 42 x 28 cm		
Package size (L x W x h)	56 x 56 x 38 cm	56 x 56 x 46 cm	
Cleaner weight	9 kg		
Packaged weight	14.3 kg	18.4 kg	
Theoretical cleaning width	220 mm		
Cycle duration (depending on cycles chosen)	1h30		1h-1h30-2h

### 1.2.2 Marking



- A** : "Push'n'Go™" filter access hatch lock
- B** : Brushes
- C** : Tracks
- D** : Handle
- E** : Clear window (depending on model)
- F** : Floating cable
- G** : Cartridges

### 1.2.3 Product conformity

This appliance has been designed and built according to the following standards:

**Low voltage directive:** 2006/95/EC

**Electromagnetic compatibility directive:** 2004/108/EC

EN 55014-1: 2000 +A1:2001 +A2:2002; EN 55014-2: 1997 +A1:2002

EN 60335-1: 2002 + A1:2004 + A2:2006 +A11:2004 + A12:2006; EN 60335-2-41: 2003 + A1:2004

Relative to which it is compliant. The product has been tested under the normal conditions of use.

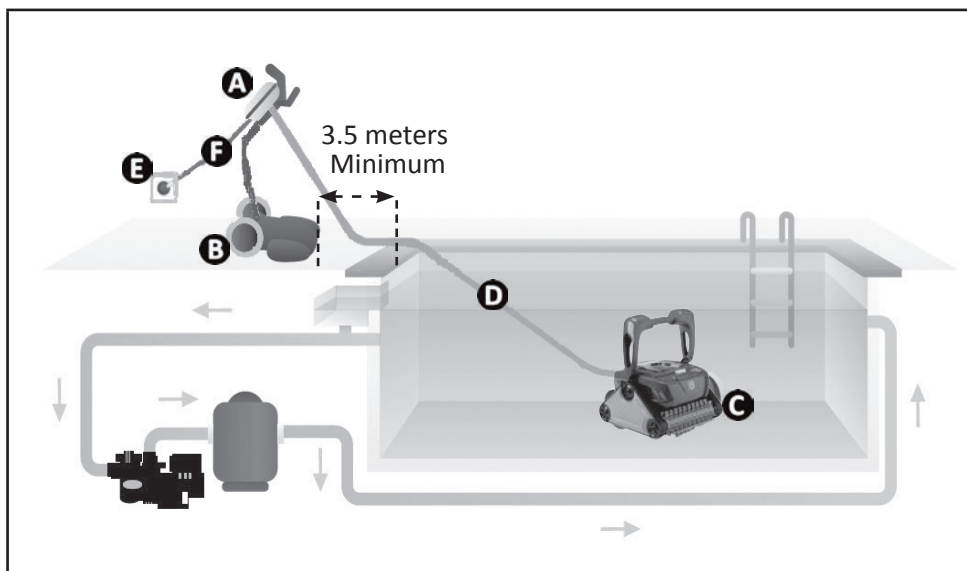
#### SAFETY STANDARDS:

The cleaners are classified by Intertek (ETL) as being compliant with the appropriate requirements of IEC 60335-2-41.



## 2 Installation

### 2.1 | Set-up

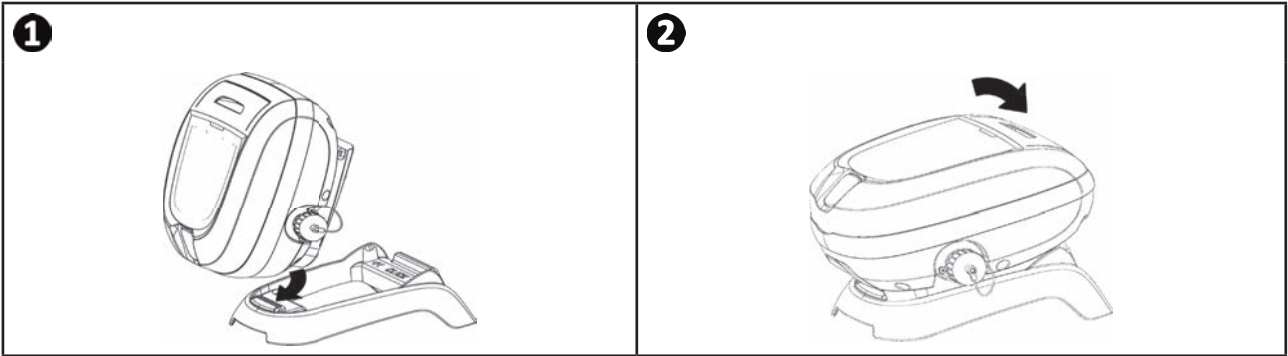


- A** : Control box
- B** : Caddy
- C** : Cleaner
- D** : Floating cable
- E** : Plug
- F** : Power cord

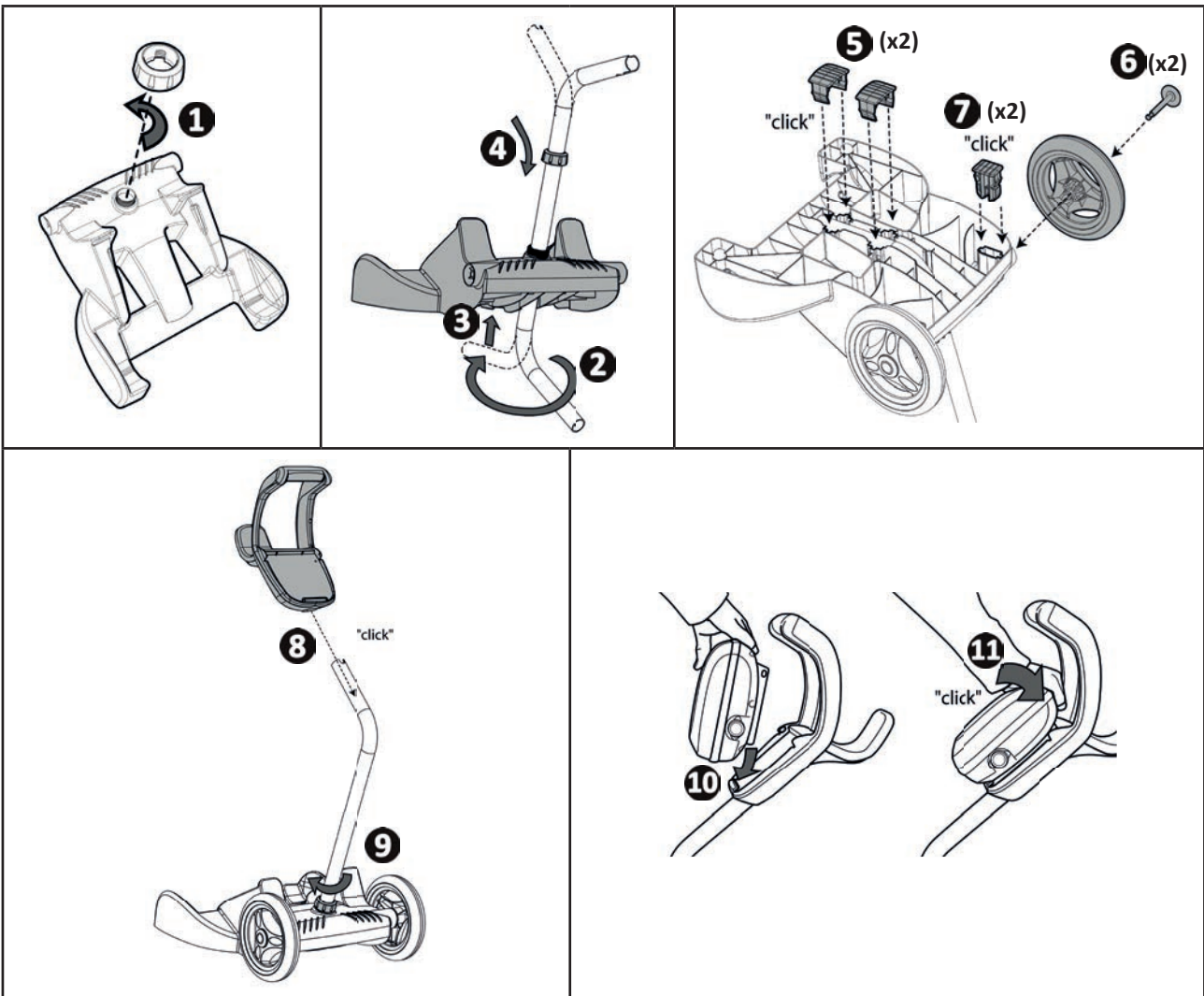


## ➤ 2.2 I Attachment to the base or caddy assembly

### 2.2.1 Attachment to the base



### 2.2.2 Caddy assembly





## 3 Use

### 3.1 | Operating principle

The cleaner is independent of the filtration system and can therefore operate autonomously. It just simply needs to be connected to the mains power supply.

It finds the best route to move around and clean the areas of the pool for which it has been designed (depending on the model: bottom, walls, water line). Debris is sucked in and stored in the cleaner's filter.

The control box enables the cleaning operations to be started, selected and programmed (depending on the model).

### 3.2 | Pool preparation



- This product is intended to be used in pools which are permanently installed. Do not use it in pools which may be dismantled. A permanent pool is built into the ground or on the ground and cannot be easily dismantled and stored.

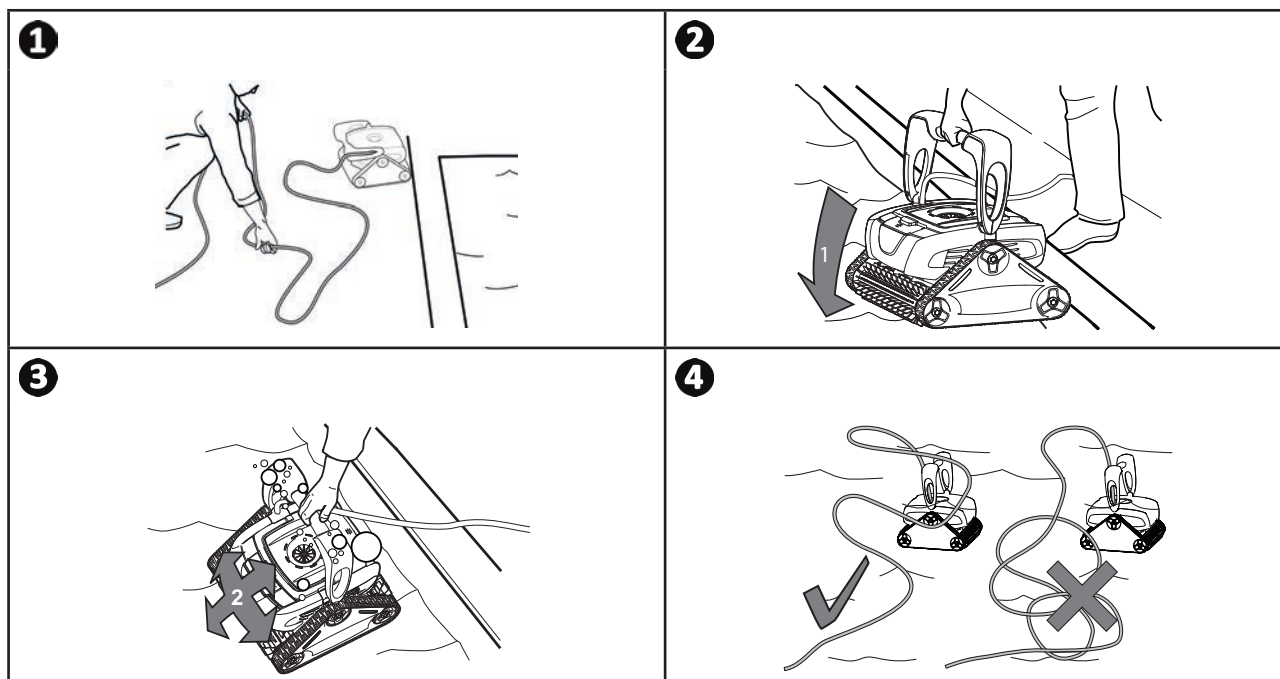
- The appliance must operate in pool water with the following properties:

Water temperature	Between 15°C and 35°C
pH	Between 6.8 and 7.6
Chlorine	< 3 mg/l

- When the pool is dirty, especially when commissioning, remove the largest debris using a net in order to optimise the appliance's performances.
- Remove any thermometers, toys and other objects that might damage the appliance.

### 3.3 Immersing the cleaner

- Roll out the full length of the cable alongside the pool to avoid the cable becoming tangled during immersion (see image 1).
- Place the cleaner vertically into the water (see image 2).
- Move it slightly in all directions so that the air contained in the cleaner escapes (see image 3).
- It is essential that the appliance sinks on its own and settles on the pool bottom. While it is immersed, the cleaner draws the length of cable it needs into the pool (see image 4).





### 3.4 I Electricity supply connections

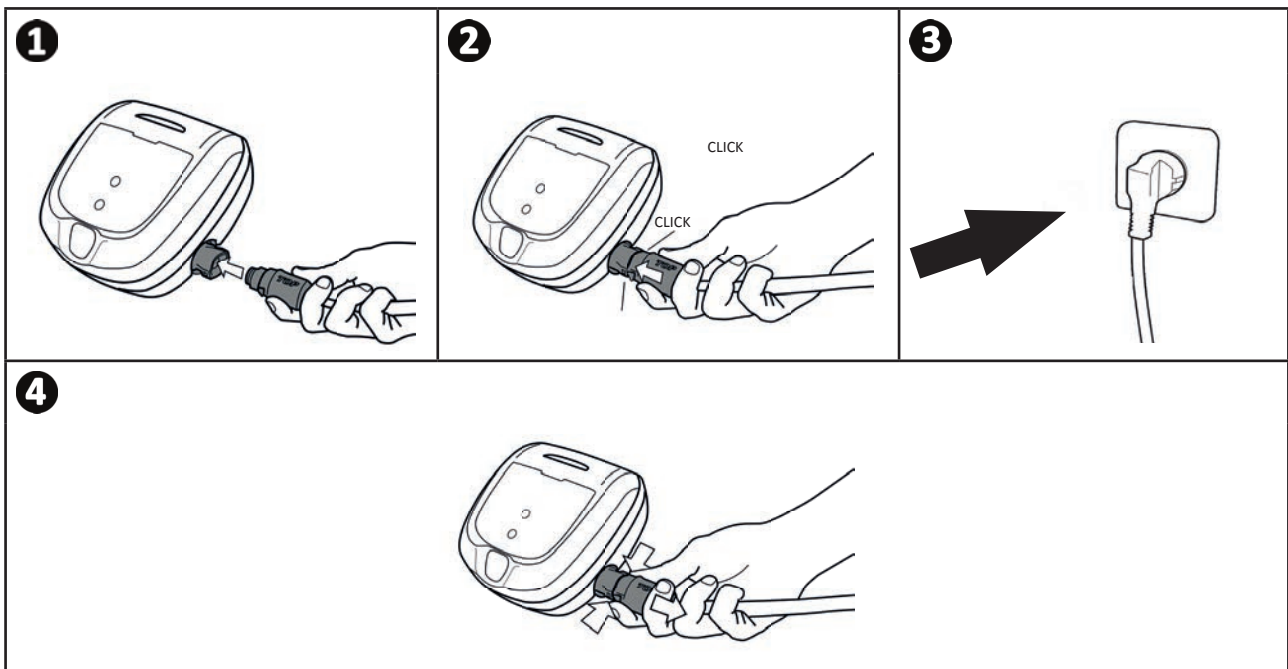
To prevent risk electrocution, fire, or serious injury, be sure to adhere to the following:



- Use of an electrical extension is prohibited when connecting the control box.
- Make sure that the socket can be easily accessed at all times and is protected from rain or splashes.
- The control box is splash-proof but must not be immersed. It must not be installed in a floodable area; keep it at least 3.5 metres away from the edge of the pool and avoid exposing it to direct sunlight.
- Place the control box near the socket.

- Connect the floating cable into the control box (see image 1).
- Push the connector in until you hear 2 clicks (see image 2). Make sure the connector is sufficiently pushed into place. If it is not, repeat the operation.
- Connect the supply cable (see image 3). Only connect the control box to a power outlet protected by a 30 mA maximum residual current device (**if in doubt contact a qualified technician**).
- To disconnect the floating cable from the control box, pinch the 2 clips at the end of the connector and pull at the same time (see image 4).

EN



**Tip: box positioning for better operation**

Place the control box in the centre of the pool's length, following the safety conditions relating to the electrical connection.

## ▶ 3.5 I Starting the cleaning cycle



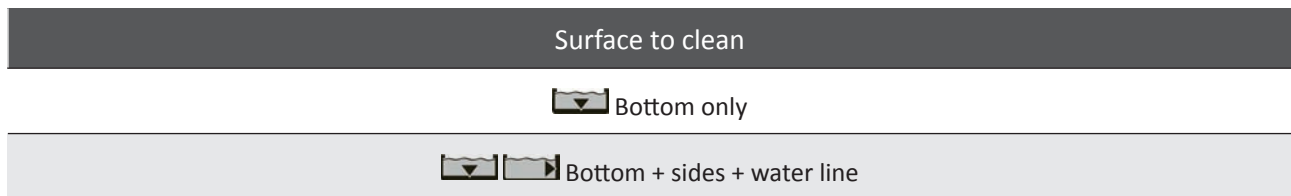
To prevent risk of injury or property damage, be sure to adhere to the following:

- Bathing is prohibited when the appliance is in the pool.
- Do not use the appliance during shock chlorination.
- Do not leave the appliance unattended for an extended period.
- Do not use the appliance if the roller shutter is closed.

- When the control box is powered up, the following symbols light up to indicate:
  - The action in progress
  - The cleaning selected (depending on model)
  - Maintenance required
- The control box switches to standby after 10 minutes and the screen is switched off. Press any key to exit standby mode. Standby mode does not stop the appliance if it is in a cleaning cycle.

### 3.5.1 Cleaning cycle selection (depending on model)

- A cleaning cycle is already configured by default: the symbols are on.
- The cleaning cycle can be selected at any time, before the appliance starts or while it is operating. The new cycle will start immediately.
- The cleaner adapts its movement strategy depending on the choice in order to optimise the coverage rate.



### 3.5.2 Launching the cleaning cycle



- Press



#### Tip to improve cleaning performance

At the start of the bathing season, launch several cleaning cycles in bottom only mode (after removing the large debris with a net). Regular use of the cleaner (without exceeding 3 cycles per week) means that your pool will always be clean and the filter less clogged.


### 3.5.3 Adjusting the cleaning time (depending on model)

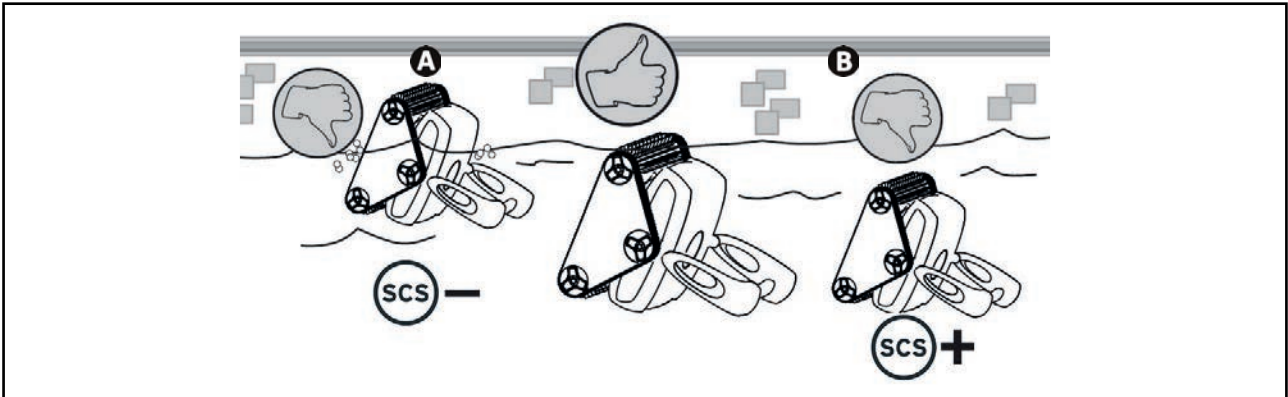
- You may reduce or increase the cleaning time at any time (+/- 0.5 H).

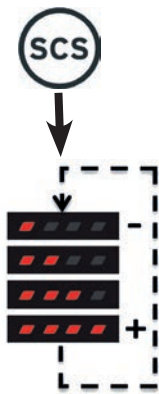
- Press the button:



### 3.5.4 Surface control

- Check that the cleaner filter is clean so as not to affect the cleaner's behaviour.
- Once the cleaning cycle has been launched, monitor the cleaner's behaviour when climbing the walls and when it brushes the water line.
- You can use the **SCS** (Surface Control System) button at any time depending on the cleaner's behaviour: **see the following table.**
- The new configuration will be effective the next time the cleaner climbs the walls.
- 2 LEDs are lit by default .



	Cleaner behaviour to be observed	Action
<b>A</b>	The cleaner climbs the walls quickly and goes past the water line until, aspirating air: <b>Reduce the number of LEDs.</b>	Press: 
<b>B</b>	The cleaner climbs the walls slowly and stops under the water line. <b>Increase the number of LEDs.</b>	

**Tip: Optimise wall cleaning and water line brushing operations**




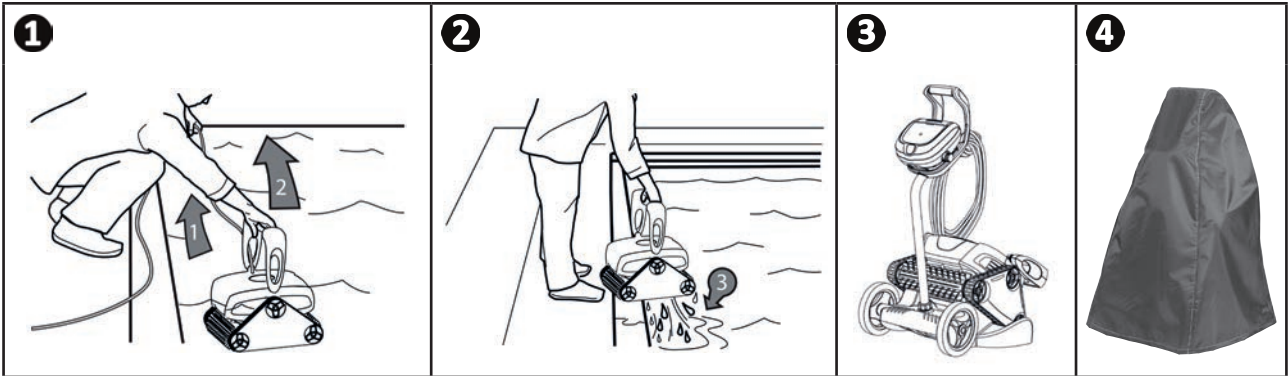
According to the type of pool lining, the cleaner will behave differently when climbing the walls. The cleaner has the **SCS** function to optimise **wall cleaning, then the water line brushing** on all types of lining. However the **SCS** function is set, the suction power remains at its maximum at all times when the cleaner is moving across the bottom of the pool.

### ▶ 3.6 I Ending the cleaning cycle



- To prevent damage to the equipment, only use the handle to take the cleaner out of the water; do not lift it with the floating cable.
- Do not leave the appliance to dry out in sunlight after use.
- Store all the elements away from sunlight, humidity and bad weather.

- Switch off the appliance by pressing .
- To take the cleaner to the edge of the pool, pull on the floating cable.
- When the cleaner is within arm's reach, pick it up by the handle and lift it gently out of the pool so that the water it contains drains into the pool (see image **1** and **2**).
- Place the cleaner vertically in the location provided on the caddy (depending on the model) for it to dry out quickly (see image **3**).
- Then store it with the control box away from sunlight and any splashes. A protective cover is available as an option (see image **4**).



#### **Tip to prevent the floating cable from becoming tangled**

The cleaner's behaviour is strongly impacted by the tangling of the cable. A cable that is correctly untangled will guarantee better coverage of the pool.

- Untangle the cable and lay it out in the sun so that it returns to its original shape.
- Then wind it up carefully and place it on the caddy handle (depending on the model) or on a fixed support.



## 4 Maintenance

- The appliance must be cleaned regularly using clean or slightly soapy water. Do not use solvents.
- Rinse the appliance thoroughly with clean water.
- Do not let your appliance dry in the sun by the pool.



**Tip: replace the filter and brushes every 2 years**

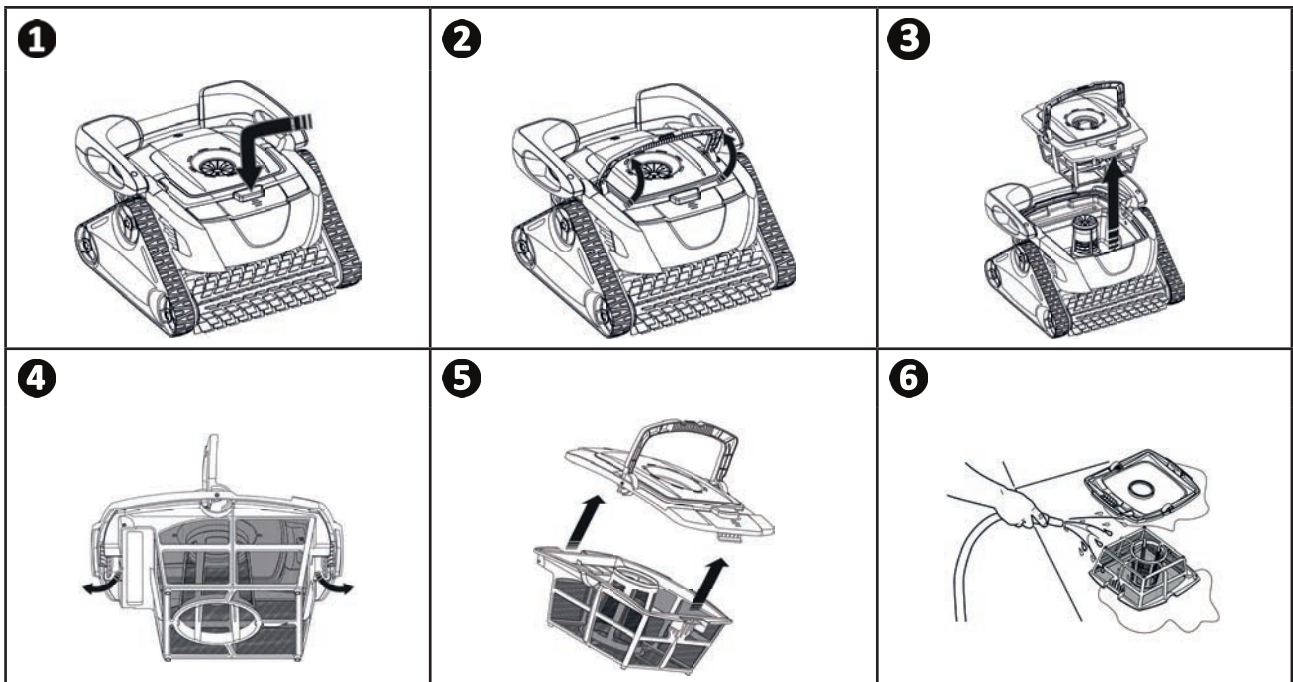
You are encouraged to change the filter and the brushes every 2 years to preserve the integrity of the appliance and guarantee optimum performance.

### 4.1 | Cleaning the filter



- The cleaner's performance may be reduced if the filter is full or dirty.
- Clean the filter regularly with clean water for efficient pool cleaning.
- If the filter is clogged, clean it with an acidic solution (spirit vinegar, for example). It is recommended that you do this at least once a year, since the filter will clog if not used for several months (winterising period).

EN





## 4.2 I Cleaning the propeller

To avoid serious injury:

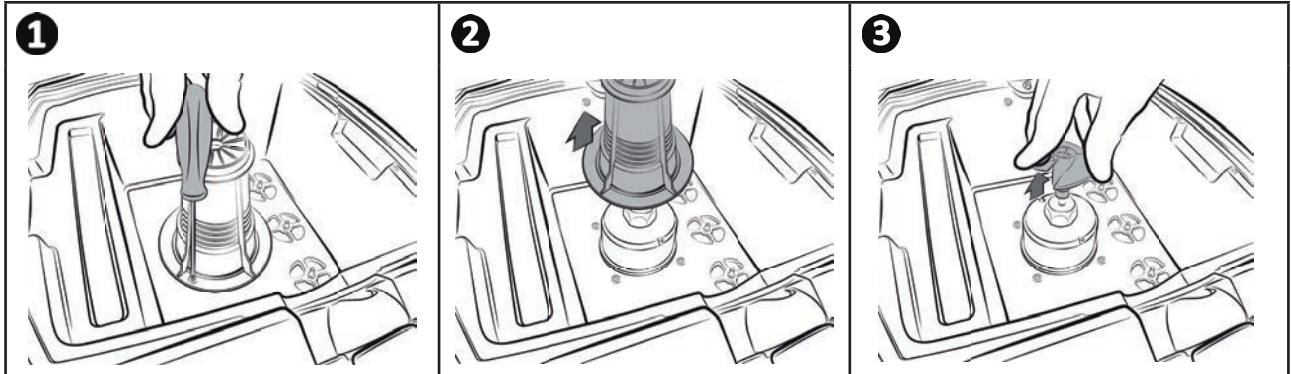


- Disconnect the cleaner from the power supply.

- Wear gloves when handling the propeller

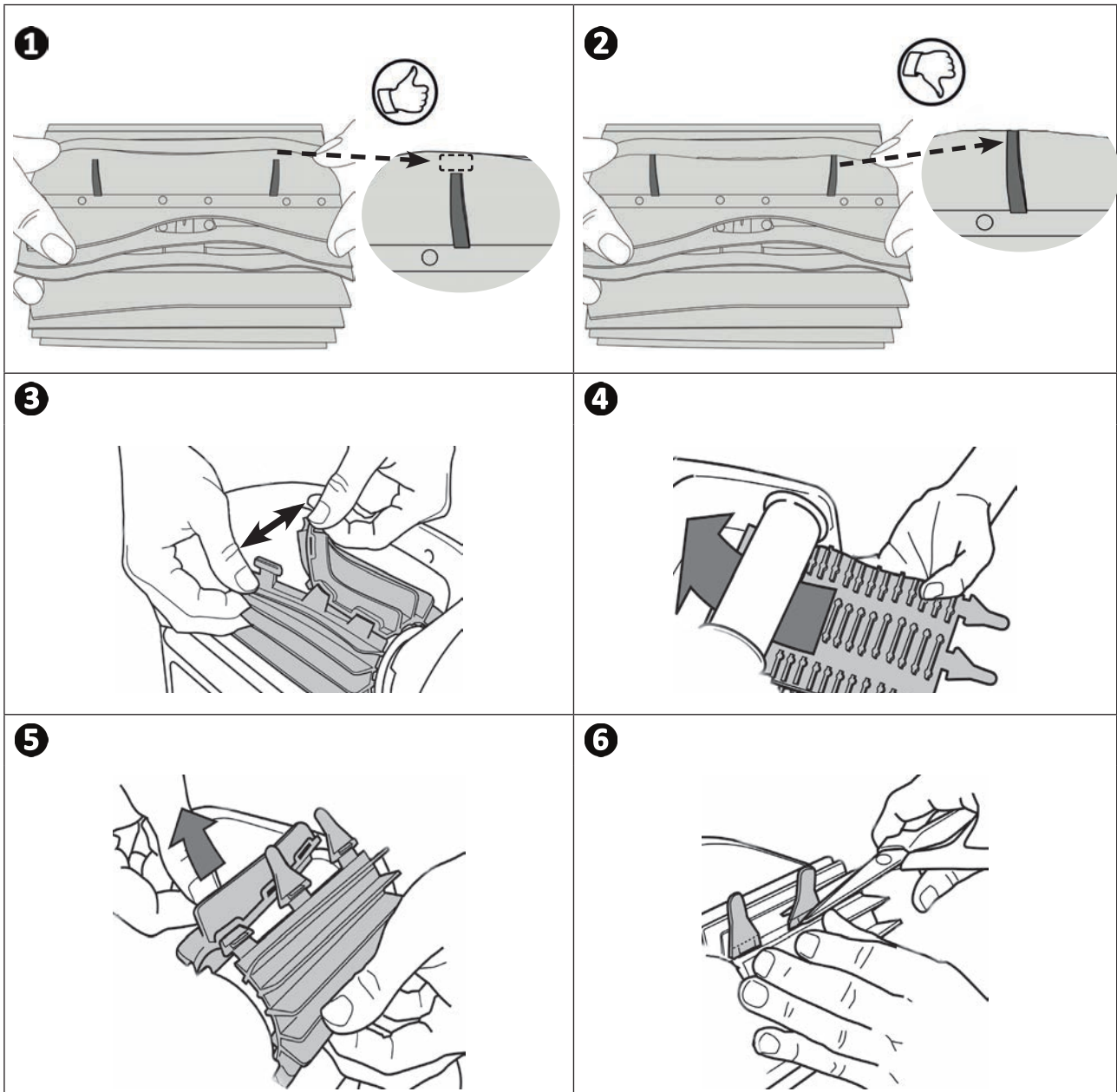


- Loosen the screw on the grid (see image **1**).
- Remove the grill carefully (see image **2**).
- Wear gloves and pull on the propeller while holding it tightly (see image **3**). Remove all debris (leaves, stones, etc.) which may be blocking the propeller.



### 4.3.i I Replacing the brushes

- Each brush is equipped with wear indicators; the distance between the indicators and the end of the brush indicates whether the brush is in good condition (see image 1).
- The brushes are worn and should be replaced when the wear indicators appear as shown in image 2.
- To remove worn brushes, remove the tabs from the holes in which they are fixed (see image 3).
- To fit new brushes, start by fitting the side without tabs under the brush holder (see image 4).
- Roll the brush around its support, slide the tabs into the attachment holes and pull on the end of each tab until its edge passes through the slit (see image 5).
- Cut the tabs using a pair of scissors for them to be level with the other blades (see image 6).

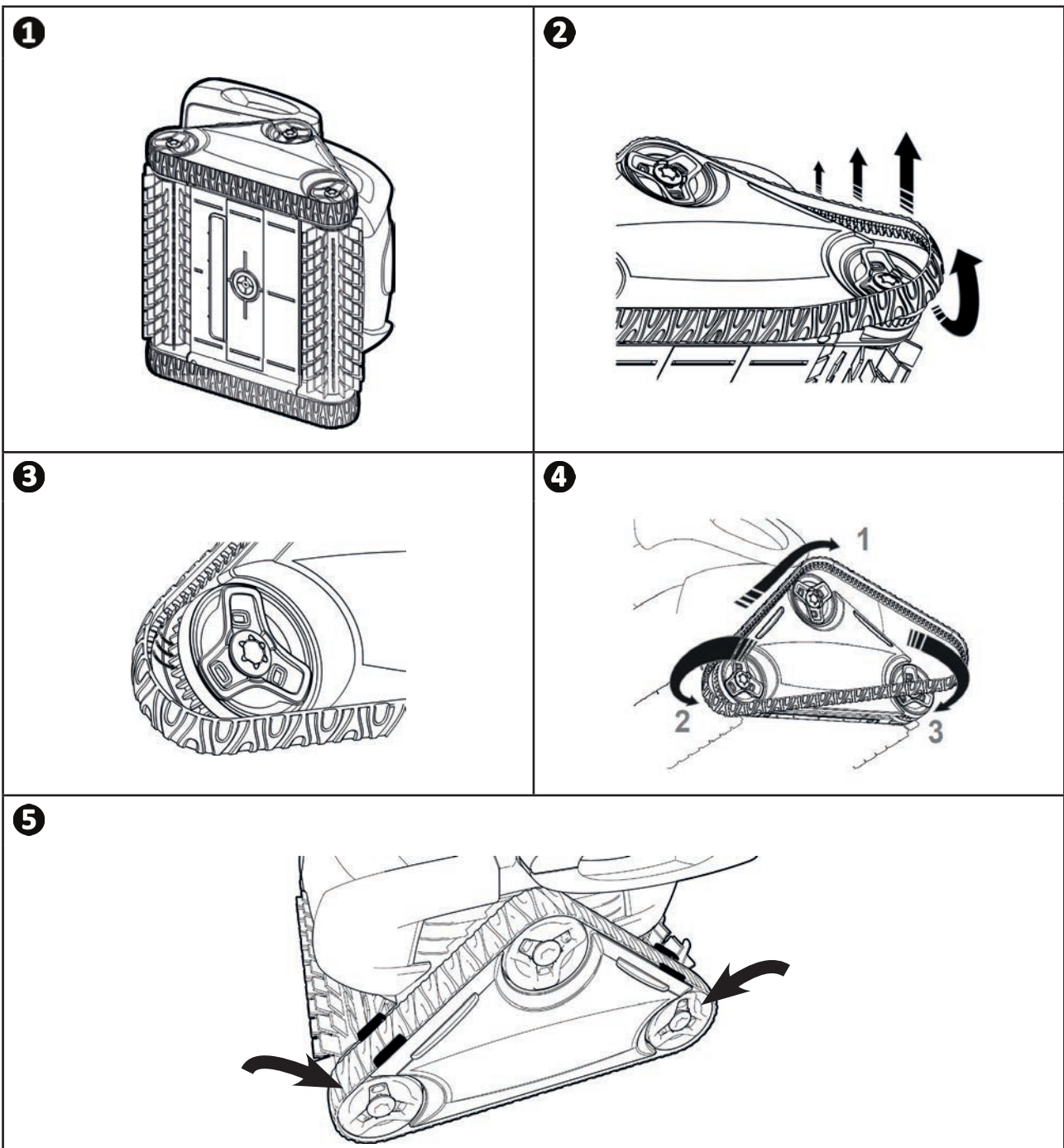


## ➤ 4.4 I Replacing the tracks



- For RX 4450 cleaners, the tracks must be replaced by the retailer.


- Place the cleaner on its side (see image **1**).
- Starting with one of the wheels, pull the inside of the track to separate it from the wheel (see image **2**). Then remove the track from the cleaner.
- To install the new track, position the inside of the track on the first wheel's grooves (see image **3**).
- Stretch the track around the second wheel, then around the last one. Press down on the track to position it correctly on the wheel grooves (see image **4**). Make sure that the track passes under the guides (see image **5**).









## 5 Troubleshooting


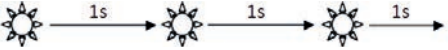

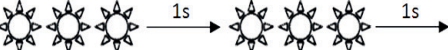


- If a problem occurs, before you contact your retailer, please carry out these few simple checks using the following tables.
- If the problem continues, contact your retailer.
-  : Actions to be performed by a qualified technician only

### 5.1 I Appliance behaviour

While operating, the cleaner does not stay firmly on the pool bottom	<p><b>This may have 3 causes:</b></p> <ul style="list-style-type: none"> <li>• There is still air in the appliance's casing. Repeat the cleaner immersion operations (see § "3.3 Immersing the cleaner").</li> <li>• The filter is full or dirty: simply clean it.</li> <li>• The propeller is damaged, <b>contact your dealer:</b> </li> </ul>
The cleaner does not or no longer climbs the pool sides	<p><b>This may have 2 causes:</b></p> <ul style="list-style-type: none"> <li>• The filter is full or dirty: simply clean it.</li> <li>• Even though the water seems clear, microscopic algae are present in your pool, they are not visible to the naked eye, and they make the sides slippery and prevent the cleaner from climbing. Carry out shock chlorination and slightly reduce the pH. <b>Do not leave the cleaner in the water during shock treatment.</b></li> </ul> <ul style="list-style-type: none"> <li>• The brushes are worn: check the wear indicators "4.3.i I Replacing the brushes", then turn the brushes to check the rotations. Replace the brushes where necessary.</li> </ul> <p><b>If the problem continues contact your retailer:</b> </p>
The cleaner does not perform any movements on start-up.	<ul style="list-style-type: none"> <li>• Check that the outlet to which the control box is connected is receiving a power supply.</li> <li>• Check that you have started a cleaning cycle and check that the indicators are on.</li> </ul> <p><b>If the problem continues contact your retailer:</b> </p>
The cable gets tangled	<ul style="list-style-type: none"> <li>• Do not unroll the entire length of the cable into the pool.</li> <li>• Place the required length of cable in the pool and place the rest on the side of the pool.</li> </ul>
The cleaner's discharge nozzles or bottom plug holes become blocked	<ul style="list-style-type: none"> <li>• Stop the filtration pump and begin a new cleaning cycle.</li> <li>• Place the control box in the centre of the pool's length, following the safety conditions, see "3.4 I Electricity supply connections". If cleaning is not optimal, vary the location of the control box and the place at which the cleaner enters the pool.</li> </ul>
<p>The cleaner climbs the walls slowly and stops under the water line</p> <p>The cleaner climbs the walls quickly and goes past the water line, aspirating air</p>	<ul style="list-style-type: none"> <li>• The cleaner may behave differently depending on the lining of the pool. A parameter may require changing to optimise the cleaner's behaviour when climbing the wall, see "3.5.4 Surface control".</li> </ul> <p><b>If the problem continues, contact your retailer.</b> </p>
The control box does not respond to any button presses	<ul style="list-style-type: none"> <li>• Unplug the power cord from the mains socket, wait 10 seconds and plug it back in again.</li> </ul>

## 5.2 I User alerts

Flashing LED: 	Solutions
	<ul style="list-style-type: none"> <li>• Check that the cleaner is correctly connected to the control box. If necessary, unplug it and reconnect it following the appropriate procedure.</li> </ul>
	<ul style="list-style-type: none"> <li>• Check that nothing is stopping the brushes and tracks from turning correctly (sand, cable, etc.). To do so, raise the tracks to check that there are no external elements jammed in a housing.</li> </ul>
	<ul style="list-style-type: none"> <li>• Cleaner operating outside the pool. Make sure you start the cleaner when it is in the water (see § “3.3 Immersing the cleaner”).</li> <li>• Check that there are no stones or hair in the propeller.</li> <li>• Clean or change the filter if necessary.</li> </ul>



**Tip: if you require assistance, inform your retailer about the appliance's condition to save time**

Provide this information to your retailer





Votre revendeur  
*Your retailer*

--

Modèle appareil  
*Appliance model*

--

Numéro de série  
*Serial number*

--

Trouvez plus d'informations et enregistrez votre produit sur  
*More informations and register you product on*

**[www.zodiac.com](http://www.zodiac.com)**



Zodiac Pool Care Europe - Boulevard de la Romanerie - BP 90023 - 49180 St Barthélémy d'Anjou cedex - S.A.S.U. au capital de 1 267 140 € / SIREN 395 068 679 / RCS PARIS

