

INTELLIPOOL™ AUTOMATION



Designed to get the most of the IntelliFlo® variable speed pump, allowing remote management of the Pentair pool equipment through any smartphone or internet connection... from anywhere on Earth.

BENEFITS

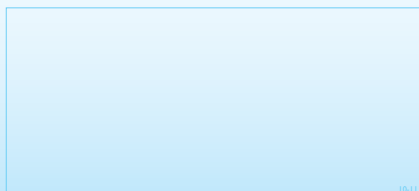
- **SAVE TIME, SAVE MONEY...** less on-site maintenance required as pool operators can analyse, solve and adjust many problems without having to actually go and inspect the pool.
- **DESIGNED FOR THE INTELLIFLO®...** always sets the correct pump speed/flow as required by other system components (heater, chlorinator, waterfalls, pool cover...) but also based on the water temperature.
- **TOTAL INTELLI-CONTROL...** over the IntelliFlo® and IntelliChlor® thanks to the unique two-way communication which sets pump and chlorinator but also receives status info and warnings. Direct access to IntelliBrite 5g LED lights colour schemes.
- **CONSTANTLY BALANCED WATER...** because filtration is active most of the time enabling continuous monitoring and adjustment.
- **ALWAYS VIGILANT AND INFORMED...** IntelliPool™ can send an e-mail directly to the pool operator if one of the pool's parameters exceeds its limit or align the frequency of e-mails with the pool parameters.
- **FREE ACCESS 24/7 ...** at www.pentairpooleurope.com for remote control and analysis by PC, smartphone or tablet.
- **EXTENSIVE SERVICING POTENTIAL...** change pool settings and monitor pool parameters for multiple pools without going to the technical room.
- **POOL RETROFIT...** installation is easy and straightforward. IntelliPool™ can easily be retrofitted onto existing pools.
- **WIRELESS COMMUNICATION WITHOUT INTERFERENCE...** IntelliPool™ elements operate on a unique radio code which prevents any risk of interference with other IntelliPool™ systems or any existing WIFI home device.
- **EASY TO USE...** and able to control all the pool parameters, commands, set timers, set points and pool history.
- **HOLISTIC APPROACH: CONTROL FILTRATION AND WATER TREATMENT...** IntelliPool™ offers you the enjoyment of a pool in perfect condition without having to worry about filter cycles or water treatment.
- **ADDITIONAL SAVINGS FOR THE POOL OWNER...** as the IntelliFlo® system saves energy by running always at the perfect speed, while using less chemicals, and thanks to the longer IntelliChlor® life.
- **SIT BACK AND RELAX...** IntelliPool™ allows pool owners to manage the pool equipment at any time and wherever they are.

www.pentairpooleurope.com



An Eco Select™ Choice

The IntelliPool® system was awarded the Eco Select™ brand that identifies our most eco-friendly products. These products save energy and water, eliminate noise and contribute to a more environmentally sustainable equipment (fewer CO₂ emissions and less chemicals discharged into the sewerage system). The Eco Select brand is clearly our "greenest" and most efficient choice.



Filters | Sand Filter Systems | Valves | Pumps | Cleaners | White Goods | Lights | Sanitizers | Salt Chlorinators | Automation | Dosing & Measuring Equipment | Maintenance Accessories | Water Features | Pump Union Kits & Baskets | Filter Cartridges

Pentair Water Belgium bvba
Industriepark Wolfsteer, Toekomstlaan 30,
B-2200 Herentals (Belgium)
TEL: +32 14 25 99 11 • FAX: +32 14 25 99 25

Pentair Water Germany GmbH
Rübgrund 9B, 64347 Griesheim (Germany)
TEL: +49 6155 84170 • FAX: +49 6155 841799

Pentair Water Middle East
Apt. 404, Al Bahara Building -
Corniche Street, Al Bahara:
Al Mhaz, P.O. Box 32789, Sharjah - UAE
TEL: +971 65 72 05 52 • FAX: +971 65 72 05 53

Pentair Water South Africa
24 Vuurslag Street - Sparran, ext. 7
1619 Kempton Park (South Africa)
TEL: +27 113 921 177 • FAX: +27 118 183 710

Contact us for training and tutoring options.



marketing.poolemea@pentair.com
www.pentairpooleurope.com

INTELLIPOOL™ AUTOMATION

POOL MONITORING AND CONTROL SYSTEM
WITH REMOTE ACCESS



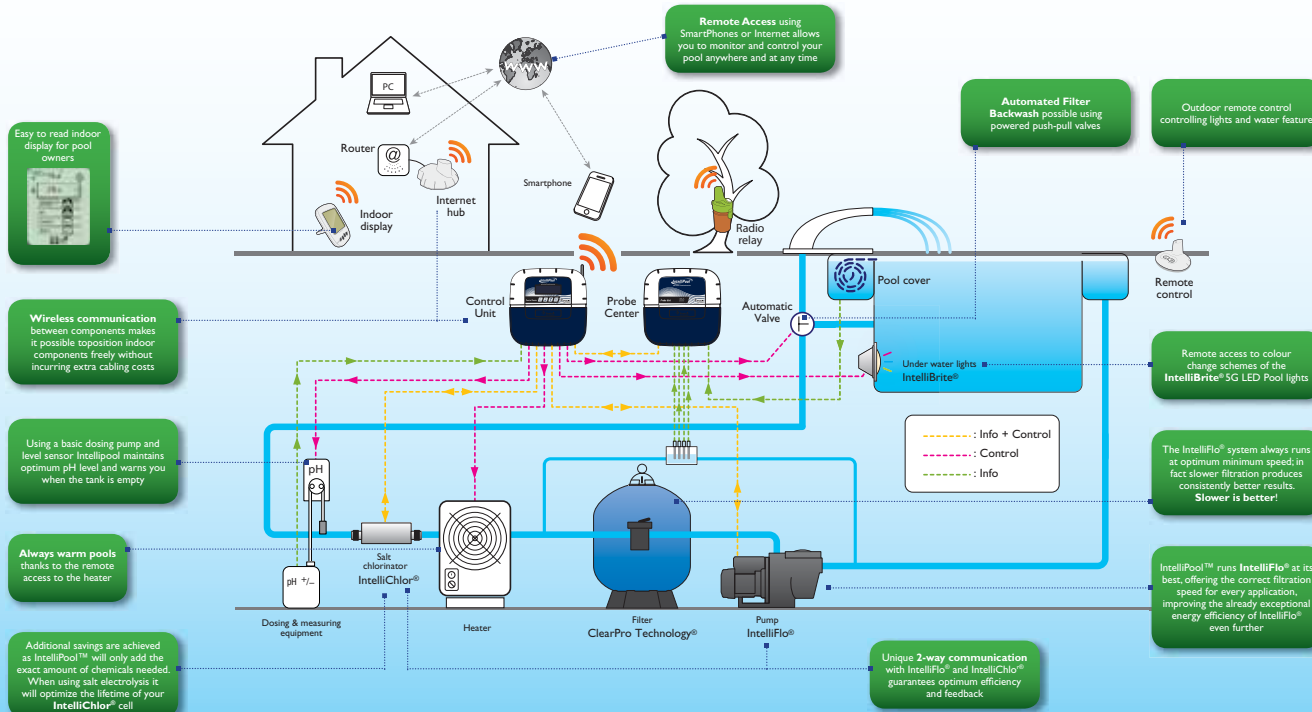
DESIGNED FOR THE INTELLIFLO®
ALLOWING REMOTE MANAGEMENT
OF THE PENTAIR POOL EQUIPMENT



POOL MONITORING AND CONTROL SYSTEM WITH REMOTE ACCESS



Controls filtration, heating, sanitizing, pH control pumps, lighting, pool covers... and much more.



Included in IntelliPool™ Automation system kit INTP-11010



Control Unit
The heart of the system controlling your pool equipment, including RS-485 communication cable for IntelliFlo®.



Probe Centre
This unit collects data from Redox (CRP), pH, temperature and Conductivity (Salt level) sensors, and also detects whether your pool cover is open or closed. All sensors are supplied with the system including pH calibration fluids.



Indoor Display
This unit shows your pool data in real time, also allowing remote activation of your pool lights.



Remote Control
Enables remote activation of your pool lights and other features (waterfall, garden lights, cleaning system, etc.).



Radio relay
Enables remote activation of your pool lights and other features (waterfall, garden lights, cleaning system, etc.).



Internet Hub
When connected to your home Internet router this unit transmits and stores your pool data onto a central server from which data can be analysed and settings can be adjusted using an Internet enabled PC or smartphone.

REMOTE ACCESS



Pool control is available at any time and everywhere for both the pool owner and pool professional using any smartphone or via an internet connection at www.pentairpoolurope.com



IntelliPool™ Internet menus:

Multiple Pools History



Possibility to get alert e-mails and e-mails with the pool parameters



Change all the settings



Parameter History



IntelliFlo® settings



IntelliChlor® settings



ANYTIME FROM ANYWHERE ON EARTH...