

Manual 522228, English

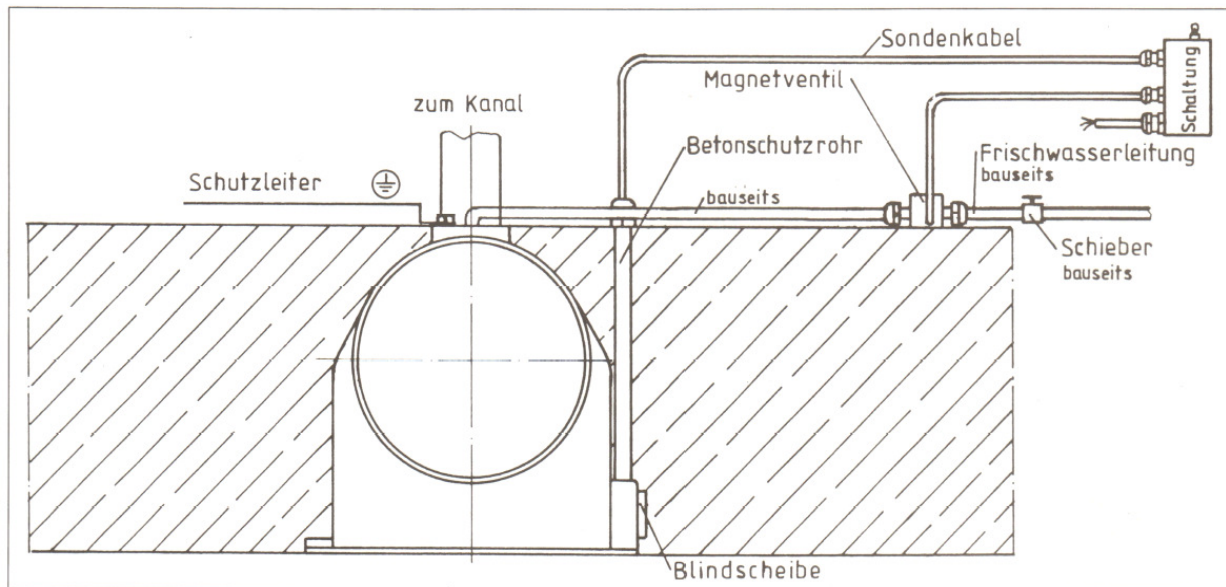
Electronic water level controller with SS1 float sensor

The electronic water level controller with SS1 float sensor is designed with integrated circuit technology and consists of:

- 1 electronic switch box
- 1 float sensor
- 1 solenoid valve

It works with a sensor that is fitted with a 5-metre-long connection cable (cross-section 0.5 mm²). The cable can be extended to up to 100 metres in length with the same cross-section at any time. The LED shows that voltage is present. The switching on and off of the float sensor takes place with a delay of approx. 15 seconds. This prevents short switching periods and the water hammer caused by them. The relay output of the switch allows switching currents of up to 5 A at an alternating voltage of up to 230 V / 50 Hz. The electronics and the sensor run on low voltage (max. 12 V). The structure itself has been constructed in accordance with relevant VDE regulations.

**1702050 Electronic water level controller for installation in skimmers
code 1252020 and 126202**



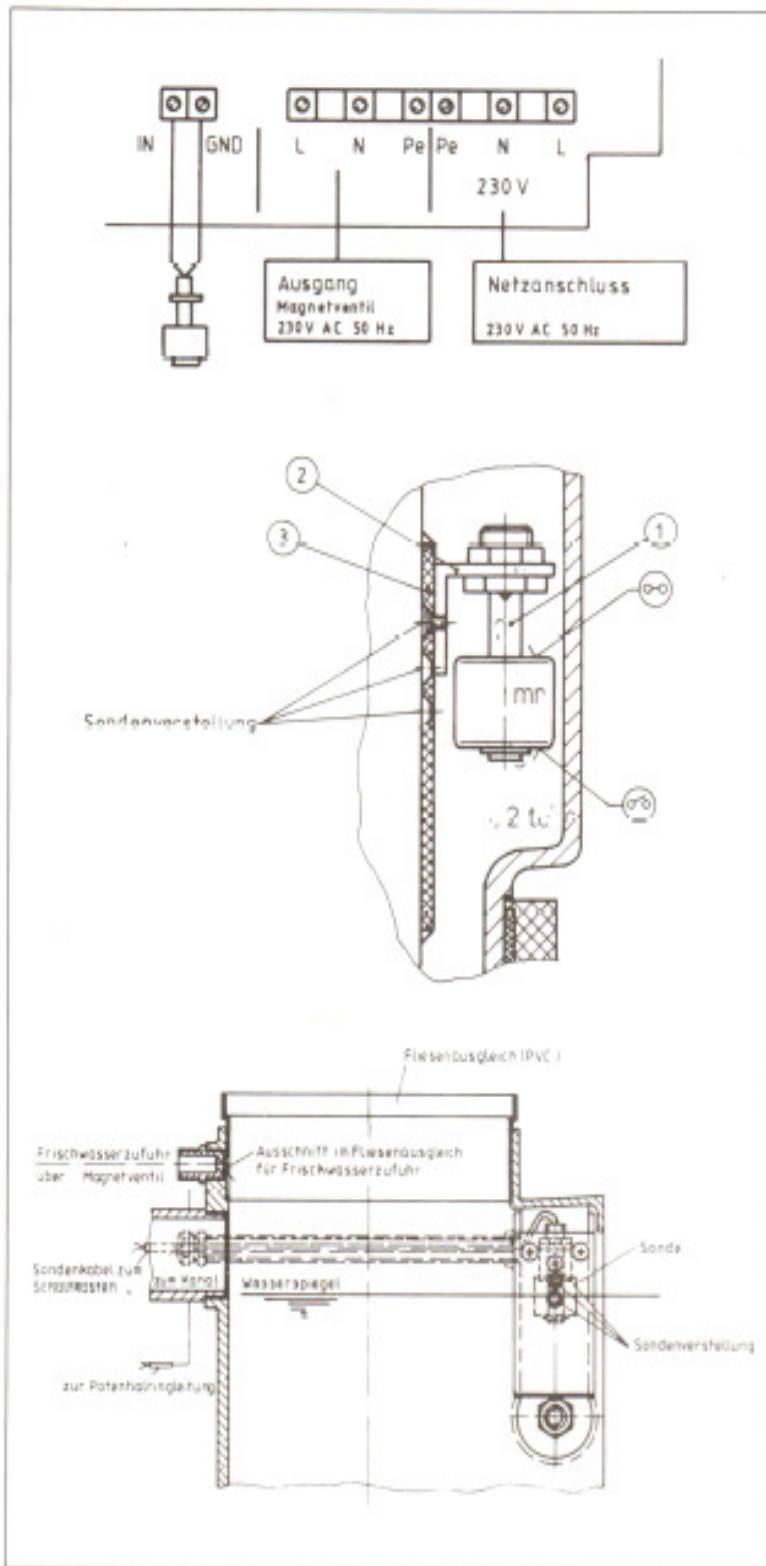
Caution: The concrete protective tube for the connection cable must be mounted prior to positioning the skimmer.

Installation instructions for electronic water level controller with SS1 float sensor

The electrical connecting work is to be carried out by a professional in accordance with VDE 0100 regulations.

A fault circuit interrupter (RCD) with $I_{FN} = 30 \text{ mA}$ must be installed.

1. Attach switch box, wire supply line and solenoid valve according to wiring diagram, connect sensor.
2. Mount float sensor (1) with adjustment bracket (2) to protective plate (3) at respective height. Then attach protective plate (3) to skimmer wall.
3. Lay sensor cable and connect to switch box.
4. Once all connections have been made, turn rocker switch to "ON". Switching point of the sensor is the upper retaining ring. The solenoid valve works with a delay of approx. 15 seconds.
5. You can simulate a function test at any time by moving the sensor.



Subject to technical changes without notice.

Hugo Lahme

Perfektion in jedem Element.

Kahlenbecker Straße 2 · 58256 Ennepetal · Germany
 Telefon +49 (0) 23 33 / 96 96-0 · Telefax +49 (0) 23 33 / 96 96 46
 E-Mail: info@lahme.de · Internet: www.lahme.de